

**Precision at the
Touch of Your Finger**



TargetScan Touch™ utilizes robotic technology to deliver precise imaging and mapping of the prostate for cancer treatments.

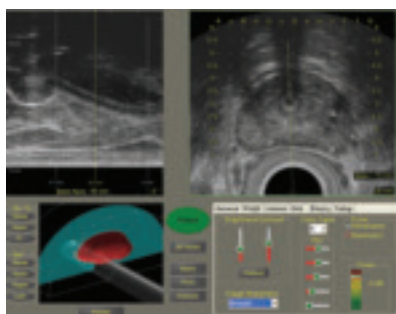
TargetScan Touch supports precise brachytherapy implantations

TargetScan Touch Advantages

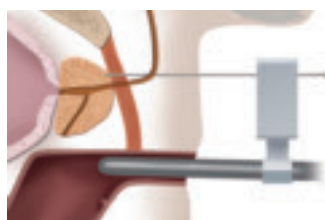
- **Confidence:** Stereotactic needle placement to precise cancer targets and preferred zones
- **Motionless probe:** Prevent prostate movements and on-screen anatomy distortions
- **For patients:** Enhance treatment efficiency and comfort with touchscreen controls

Technology Features:

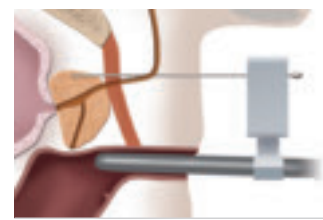
- **Prostate mapping system:** Target pre-planned treatment sites
- **3-D image acquisition:** View both sagittal and transverse planes with improved visibility of the apex region
- **Hands-free imaging:** Easily change viewing planes while motionless probe remains untouched
- **Treatment records:** Record treatments for future reference and repeatable procedures
- **For physicians:** Support workflow and existing hardware investments through its compatibility with leading brachytherapy planning systems



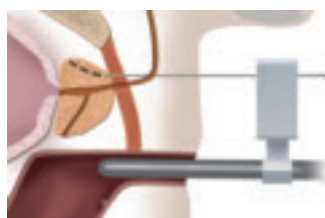
Unprecedented views of the treatment area



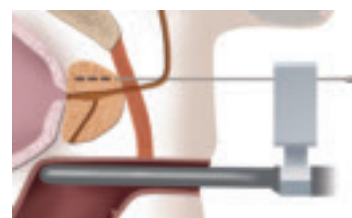
Physicians often retract traditional probes to observe initial needle insertion.



The movement creates uneven support for the gland and the prostate may shift upon full needle insertion.



Movement and the resulting distortion may impede the delivery of seeds to pre-planned targets.



TargetScan Touch prevents prostate movement through full support of the gland, which assists in more accurate seed placement to cancer targets.

TargetScan Touch System Overview

- The TargetScan Touch motionless probe is augmented with the system's mapping technology and 3-D image acquisition.
- TargetScan Touch's robotic technology promotes a total viewing volume of 380 mL.
- Complete stereotactic prostatic coverage with sagittal and transverse access to target sites.
- Ensures confident needle and seed placement to pre-planned targets.



www.envisioneeringmedical.com

Envisioneering Medical Technologies
1982 Innerbelt Business Center Drive
St. Louis, MO 63114
P: 314.429.7367
F: 314.429.7701

KM-0014C